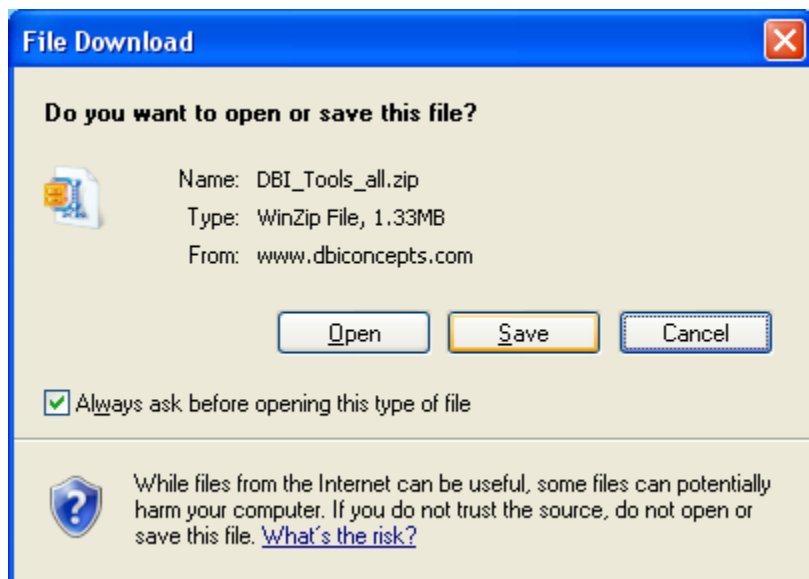
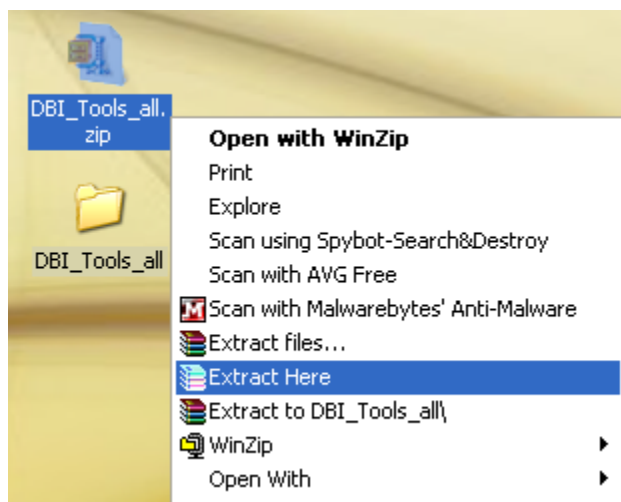


Installation Guide

Save the file to your computer



Right click on the file and select "Extract to here". The DBI_Tools_all folder will appear in the same location as the .zip file. Use the files in the unzipped folder for installation.

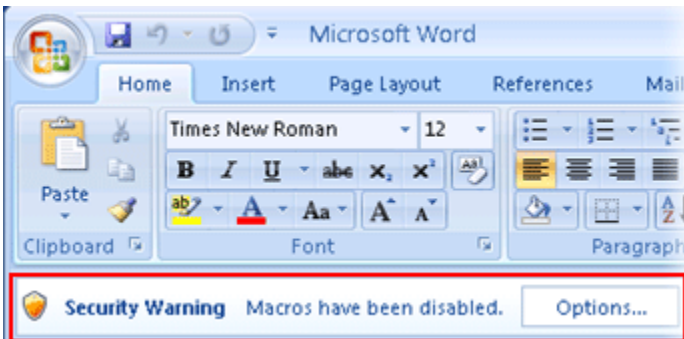


The macros from DBI have been digitally signed and can be trusted. See Comodo security for more information:

<http://www.comodo.com/business-security/digital-certificates/code-signing.php>

Using the Setup.xls installation file

1. Double-click the file "Setup.xls" to begin the installation process.
2. If the message bar displays a Security Warning then click the "Options" button



The macros from DBI have been digitally signed and can be trusted. See Comodo security for more information:

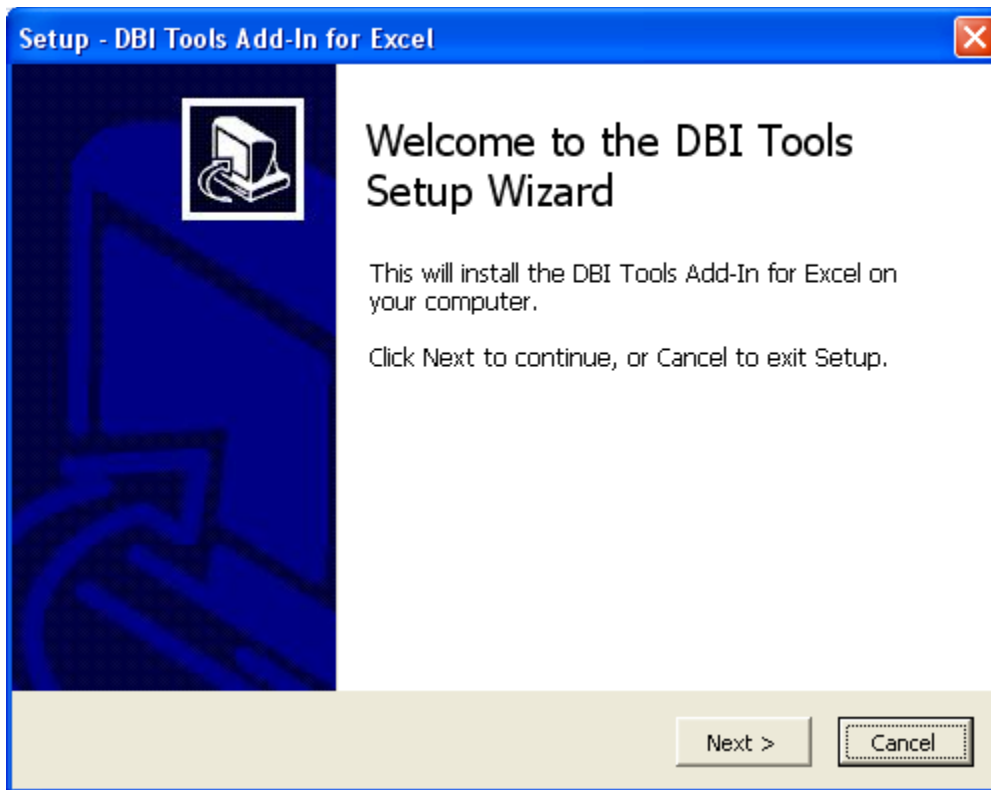
<http://www.comodo.com/business-security/digital-certificates/code-signing.php>

3. Select "Enable this content" then click "OK."



(NOTE: If you prefer not to allow macros the application can be installed manually. See the next section for manual installation instructions)

4. You will see a window with the message “Welcome to the DBI Tools Setup Wizard”



5. The wizard will guide you through a multi-step installation process, concluding with an “Installation Complete” message window.

Manual Installation

1. Copy the downloaded files to C:\DBI\DBI Tools
(If the folders “DBI\DBI Tools” do not exist you will need to create them)
2. Display the Add-ins dialog box:

Excel 2007:

Click the **Office** button, and choose **Excel Options**

In the Excel Options dialog box, click the **Add-Ins** tab

In the drop-down labeled **Manage**, choose Excel Add-ins

Click Go

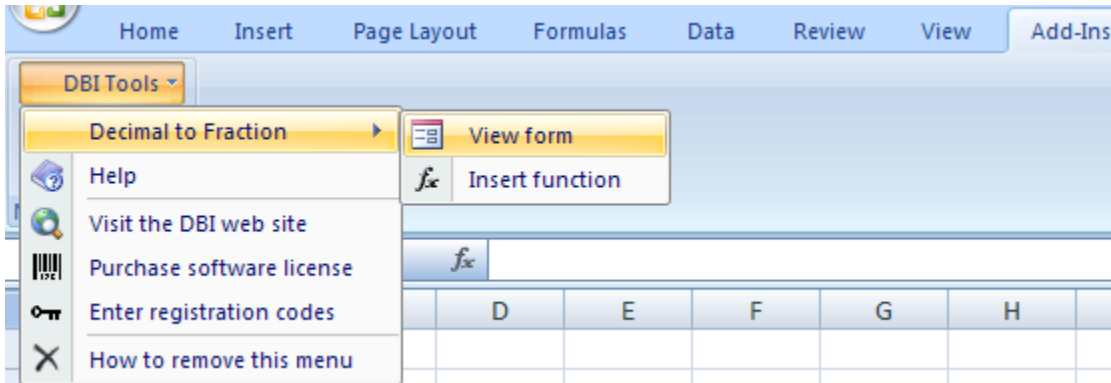
Excel 2000 - 2003:

Click the **Tools** menu, and choose **Add-Ins**

3. Click the **Browse** button and locate the xla file in C:\DBI\DBI Tools
4. In the Add-Ins dialog box, place a checkmark next to the add-in
5. Click **OK**.

The DBI add in will be installed, and Excel will display a new menu: **DBI Tools**

(NOTE: If you are using Excel 2007 the DBI Tools menu will appear under the Add-Ins tab on the Ribbon once installed)



Tips:

By default, the files are installed to "C:\DBI\DBI Tools". However, the product can be installed in any directory.

NOTE: Microsoft Vista security limits some of the installation location options. It may be necessary to have administrative privileges if you want to install the application.

NOTE: A quick way to display Excel's add-ins dialog box is to press **Alt+TI**.

Contact info:

Web site - www.dbiconcepts.com

Support email - support@dbiconcepts.com